

**REVOLUTIONARY DESIGN & MINIMALLY-INVASIVE TECHNIQUE**

Using the unique instrumentation designed specifically for the minimally-invasive technique, the surgery can be performed through a 3" to 4" incision. This reduces the surgical scar and decreases the recovery time and complications related to more extensive surgery. The unique design of the ADVANCE® Uni-Knee implants match the anatomic shape of the normal knee. **FIGURES 4 & 5** | This replaces designs that require the surgeon to reshape the bone to fit the implant, thus resulting in more bone removal. By providing this more natural shape, the ADVANCE® Uni-Knee may provide more normal motion and lead to longer implant life that could delay or prevent the need for total knee replacement. If a future procedure is necessary, the resurfacing design of the implant preserves quality bone for later surgery.



Fig. 4

Post surgery x-ray of the ADVANCE® Unicompartmental Knee.



Fig. 5

ADVANCE® components were designed to match the shape of the normal knee joint.

For many in today's world, approaching or reaching "middle age" no longer signifies a time to slow down the activities of a healthy and happy lifestyle. Despite the symptoms of the normal aging process, most individuals strive to continue an active lifestyle that includes regular work, exercise and leisure activities. When this lifestyle is interrupted by the pain and suffering of osteoarthritis, minimally-invasive unicompartmental knee arthroplasty may be the solution. For some, the ADVANCE® Uni Knee System may delay the need for total knee replacement until much later in life, while preserving more normal knee function. For those in a more senior age group, this less invasive and less extensive procedure may allow them to avoid total knee replacement altogether.

**ADVANCE®**  
UNICOMPARTMENTAL KNEE SYSTEM



For information on a surgeon near you, email us today at: [uniknees@wmt.com](mailto:uniknees@wmt.com)

With the improved technology of the ADVANCE® Unicompartmental Knee System and the skill of your orthopaedic surgeon, returning to the regular activities of your life may now be an option. Talk to your doctor today to find out if you are a candidate for the ADVANCE® Unicompartmental Knee through a minimal incision procedure.



5677 Airline Road  
Arlington, TN 38002  
901.867.9971 phone  
800.238.7188 toll-free  
[www.wmt.com](http://www.wmt.com)

ADVANCE® is a registered mark of Wright Medical Technology, Inc. U.S. Patent Pending.  
©2002 Wright Medical Technology, Inc. All Rights Reserved  
Stock Photography provided by Getty Images/Photodisc

Reclaiming an *Active Lifestyle.*



Osteoarthritis of the knee joint is a condition that affects tens of millions of individuals in the United States alone. Those dealing with osteoarthritis may experience severe pain, difficulty walking and inability to perform even simple daily activities.

## WHAT IS OSTEOARTHRITIS?

The joints in our body are covered with a protective layer of cartilage, which acts as a natural shock absorber or cushion. Over time, this natural cushion may wear down due to osteoarthritis; a disease causing the progressive deterioration of joint cartilage. If the wear becomes significant, it can result in the painful condition of bone rubbing on bone. **FIGURE 1 |**



Unfortunately, there is no cure for osteoarthritis. The goal of treatment is to relieve pain. In the early stages, treatment consists of medications, injections, and physical therapy. When these are no longer effective, surgery may be necessary.

X-ray showing worn cartilage and resulting bone rubbing on bone.

Fig. 1



## TOTAL KNEE OR PARTIAL KNEE REPLACEMENT?

Until recently, the only option was surgery for a total knee replacement. Now, however, due to recent advances in technology, many individuals with knee osteoarthritis are candidates for a much more conservative procedure known as **unicompartmental knee arthroplasty**, or partial knee replacement, which is performed using a **minimally-invasive** surgical technique.

A total knee replacement involves replacing the knee with a metal and plastic joint to eliminate the pain of bone rubbing on bone. Although the procedure is usually very successful, it requires an 8" to 12" incision, several days in the hospital and then extensive physical therapy in order to regain as much of the function of the knee as possible. Recovery time can be anywhere from 3 to 6 months.

In many patients, osteoarthritis affects only a portion of the knee. Instead of replacing the entire knee, these patients will often benefit from a unicompartmental surgery that replaces only the affected part of the knee. By using this procedure, the healthy region of the patient's knee is conserved in case future surgery is needed. **FIGURES 2 & 3 |**



Fig. 2

Unicompartmental replacement for partial knee osteoarthritis preserves the patients' healthy bone.

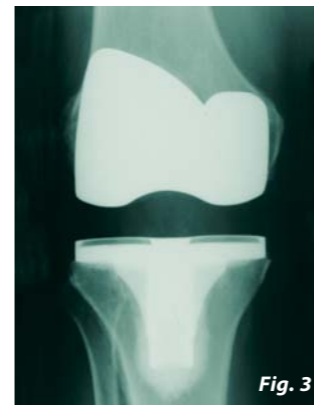


Fig. 3

Traditional total knee replacement addresses more extensive osteoarthritis of the knee.



In addition, this procedure can now be performed using a minimally-invasive surgical technique, which uses a 3" to 4" incision instead of the standard total knee incision. Compared to total knee replacement, a unicompartmental knee replacement performed using a minimally invasive surgical technique offers the following advantages:

- Shorter hospital stay
- More rapid recovery
- Shorter rehabilitation
- Increased joint motion
- More normal knee function
- Smaller incision and scar (3" to 4" as opposed to 8" to 12")
- Less bone removal, providing more options for future procedures if needed.

These benefits are now available through the technological improvements in systems such as the ADVANCE® Unicompartmental Knee system, where state of the art bone conserving implants are combined with revolutionary minimal incision instrumentation. This provides a more conservative alternative to more invasive unicompartmental or total knee replacement systems.