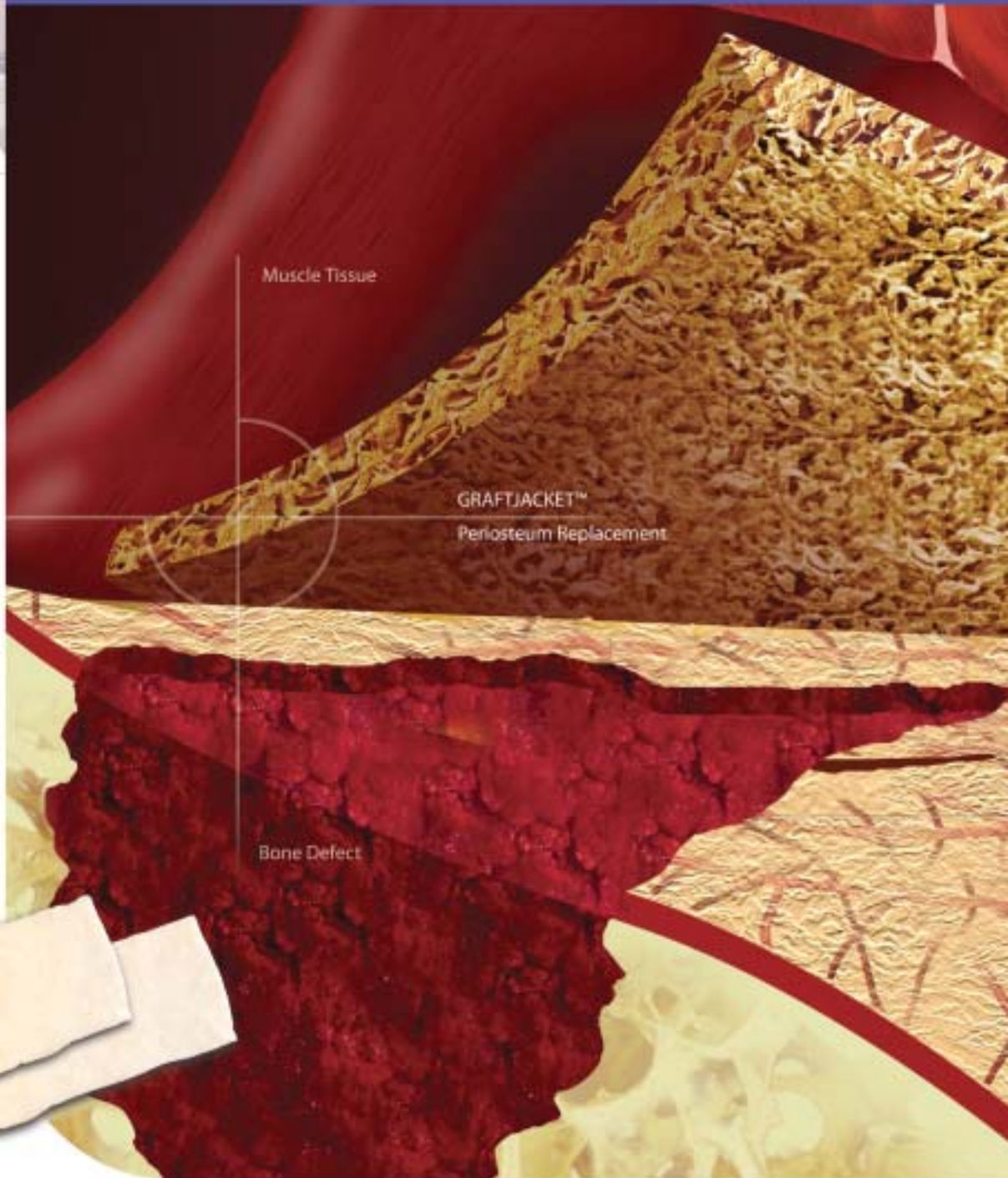


BIO-ORTHOPAEDIC solutions

GraftJacket™

ACELLULAR PERIOSTEUM REPLACEMENT SCAFFOLD

A PROTECTED MICROENVIRONMENT FOR BONE REPAIR



Minimizes fibrous tissue invasion.
Promotes revascularization. Remodels to host tissue.

WRIGHT.

GraftJacket™

ACELLULAR PERIOSTEUM REPLACEMENT SCAFFOLD

The GRAFTJACKET™ Periosteum Replacement Scaffold is designed to be utilized as an onlay periosteal replacement scaffold for uncontained bone defects. The pluripotent membrane provides a favorable microenvironment for bone repair, similar to native periosteum, by: **1)** Providing optimal conditions to mediate resorption of the underlying bone graft **2)** Preventing fibrous tissue migration into the graft site, and **3)** Quickly revascularizing to promote nutritional diffusion, cell proliferation, and osteogenesis within the bone defect.

GRAFTJACKET™ Scaffold is composed of biological substrate components including collagen types I, III, IV, and VII, elastin, chondroitin sulfate, proteoglycans, hyaluronic acid, laminin, tenacin, and fibroblast

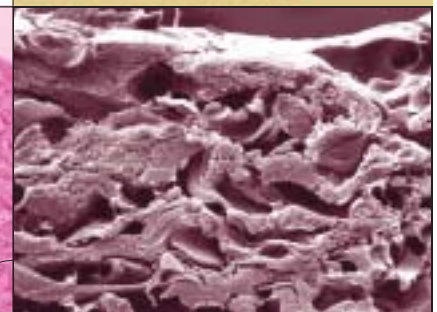
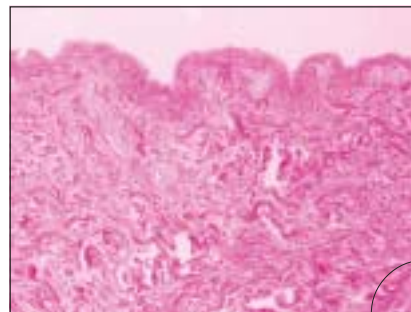
growth factor.

Patented processing technology preserves this biochemical matrix and results in an extracellular framework that is completely intact. This intact matrix, complete with preserved vascular channels, functions to support rapid revascularization and cellular repopulation.

Artist rendering depicting close-up view of collagen and proteoglycans present within the GRAFTJACKET™ Scaffold.



EXCEPTIONAL SCIENCE AND



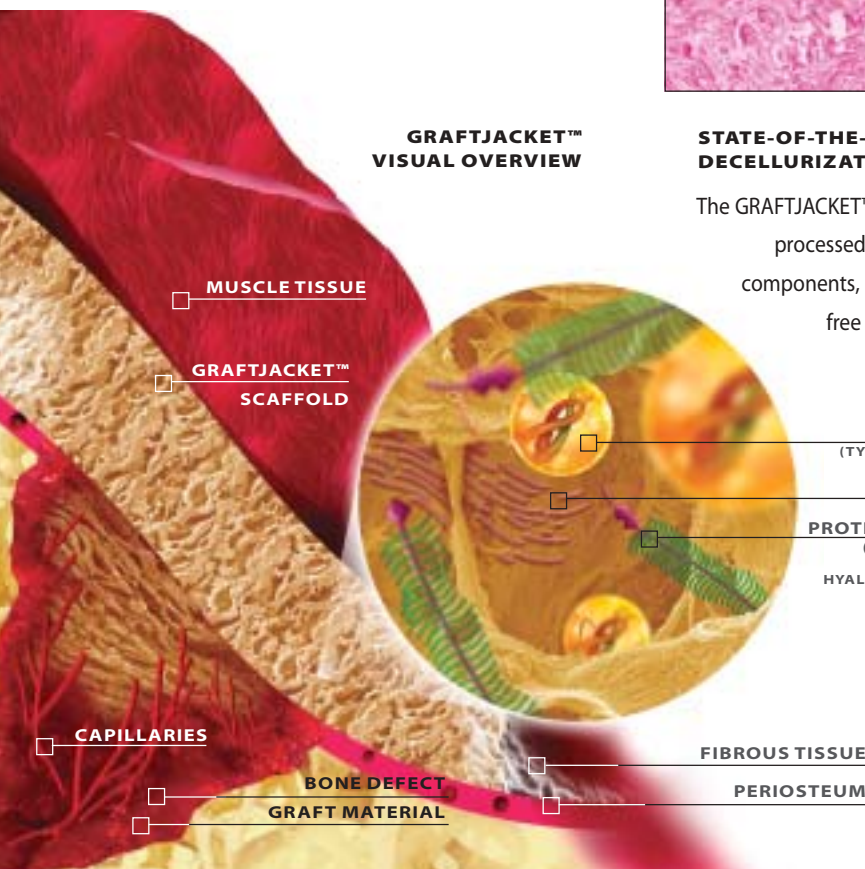
GRAFTJACKET™ VISUAL OVERVIEW

STATE-OF-THE-ART DECELLURIZATION

The GRAFTJACKET™ Scaffold is carefully processed to extract all cellular components, rendering the matrix free of immune response targets.

PROPRIETARY CRYOGENIC PROCESSING TECHNOLOGY

The GRAFTJACKET™ Scaffold is freeze-dried with a proprietary method that eliminates the formation of damaging ice crystals. By eliminating the destruction caused by ice formation, the extracellular matrix remains intact, providing the ideal host environment for revascularization and cellular repopulation.



MUSCLE TISSUE

GRAFTJACKET™ SCAFFOLD

CAPILLARIES

BONE DEFECT
GRAFT MATERIAL

FIBROUS TISSUE

PERIOSTEUM

COLLAGEN
(TYPE I, III, IV, VII)

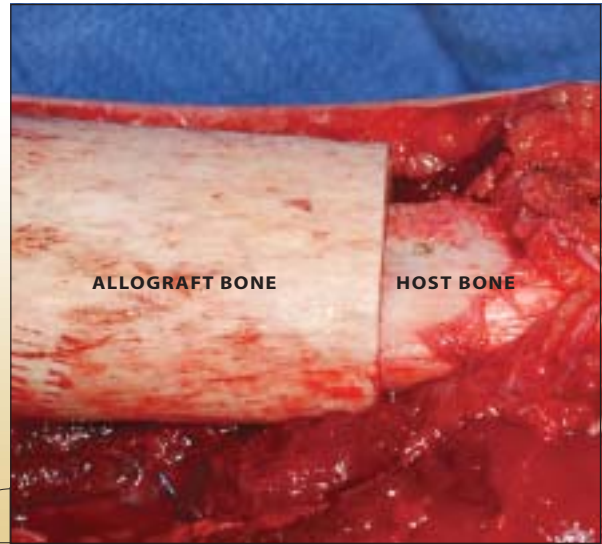
ELASTIN

PROTEOGLYCANS
(CHONDROITIN
SULFATE &
HYALURONIC ACID)

CASE STUDY

13 YEAR-OLD MALE
with osteosarcoma in the right proximal tibia

Required reconstruction using an allograft-prosthetic composite.



CASE STUDY PHOTOS (L-R)
(A) GRAFTJACKET™ Scaffold sutured circumferentially over the host / allograft junction.

(B) Junction was filled with graft material (ALLOMATRIX® Injectable Putty) and covered with the GRAFTJACKET™ Membrane.

(C) Graft composite bridging the junction.



SURGICAL TECHNIQUE

presented by Mike Neel, MD

STEP 1 site preparation & sizing

Assess the size of the defect to determine the amount of periosteum tissue that has been damaged. The GRAFTJACKET™ Scaffold is provided in 5x5 cm and 5x10 cm sheets.



STEP 2 graft & obliterate dead space

Repair the underlying defect with appropriate grafting technique.



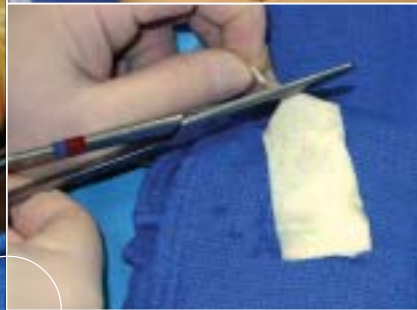
STEP 3 rehydration

Rehydrate the GRAFTJACKET™ Scaffold (utilizing saline or bone marrow aspirate) for 5–10 minutes, or until desired handling properties are achieved per instructions on package insert.



STEP 4 remove backing

Remove backing from the GRAFTJACKET™ Scaffold prior to implantation.



STEP 5 trim to fit

With scissors or scalpel, trim the GRAFTJACKET™ Scaffold to the appropriate size to cover the defect by orienting the basement membrane surface toward the bone graft and the reticular surface toward the vascular supply of adjacent tissue.



STEP 6 create a larger membrane

If a larger membrane is necessary, utilize running sutures to connect one or more GRAFTJACKET™ Scaffolds.



STEP 7 fixation of membrane

After adequate coverage is established, utilize monofilament suture to attach the GRAFTJACKET™ Scaffold to the periosteum or surrounding soft tissue. Tacks or surgical adhesives may also be utilized.

Wright Medical Technology, Inc. does not recommend a particular surgical procedure. Proper surgical procedures and techniques are necessarily the responsibility of the medical professional. Each surgeon must evaluate the appropriateness of the surgical procedure used based on personal medical training and experience.

Cadaveric Model Used For Illustrative Purposes

1

PROVIDE MATRIX FOR RAPID REVASCULARIZATION

The intact extracellular matrix provides an ideal template with preserved channels for rapid revascularization.

2

MINIMIZE FIBROUS TISSUE INFILTRATION

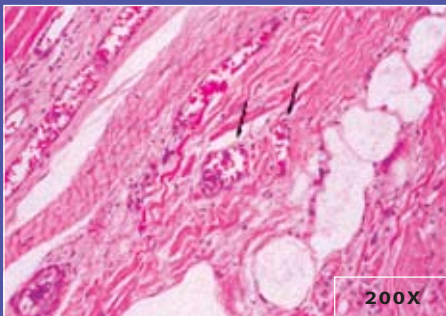
The GRAFTJACKET™ Scaffold provides a natural tissue layer which functions to minimize the deleterious effects of fibrous tissue invasion.

3

CREATE PROTECTED ENVIRONMENT FOR HEALING

The GRAFTJACKET™ Scaffold provides preserved elastin, collagen fibers, proteoglycans, and other important three-dimensional structural factors to create a protected environment for healing.

FUNCTIONALITY



H&E staining denotes revascularization within the membrane at 5 weeks.

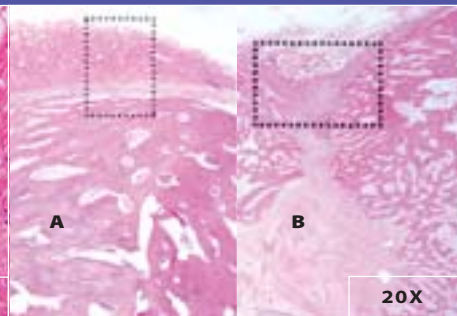
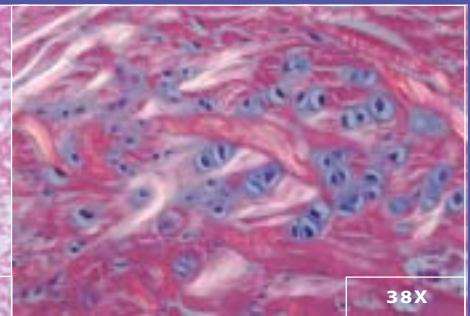


Image A bone defect covered with GRAFTJACKET™ Scaffold, revealing no fibrous tissue invasion with the graft site. By contrast, the uncovered defect (Image B) is filled with dense fibrous tissue.

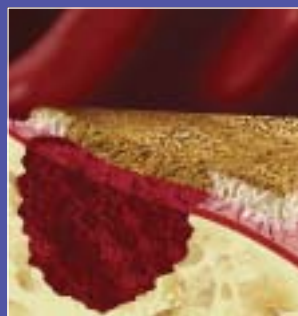


Abundant cellular activity is evident within the graft site, as well as within GRAFTJACKET™ Scaffold.

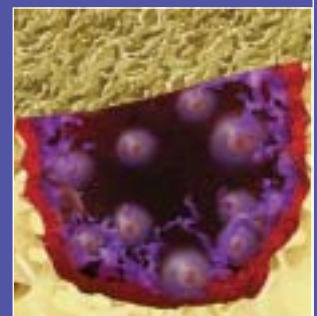
Artist rendering depicting the process of revascularization within GRAFTJACKET™ Scaffold and the bone graft site.



Artist rendering depicting the protective function of the GRAFTJACKET™ Scaffold minimizing fibrous tissue infiltration.



Artist rendering depicting the osteogenic components contained in a protected microenvironment.



ORDERING INFORMATION



8600-5X05	GRAFTJACKET™ SCAFFOLD (5CM X 5CM)	1 EA
8600-5X10	GRAFTJACKET™ SCAFFOLD (5CM X 10CM)	1 EA

FOR BONE GRAFTING PROCEDURES, USE:



86XC-0500	ALLOMATRIX® CUSTOM BIOMATRIX 5CC	1 EA
86XC-1000	ALLOMATRIX® CUSTOM BIOMATRIX 10CC	1 EA

INDICATIONS

PERIOSTEUM REPLACEMENT OVER:

- Traumatic Fractures with Severe Bone Loss
- Uncontained Bone Defects
- Donor Harvest Sites



5677 Airline Road
Arlington, TN 38002
901.867.9971 phone
800.238.7188 toll-free
901.867.4793 fax

biologics@wmt.com
www.wmt.com

™Trademarks and ®Registered marks of Wright Medical Technology, Inc.
Donated human tissue processed by LifeCell Corporation for Wright Medical Technology, Inc.
Covered by one or more of the following U.S. patents: 4,865,871, 5,024,830, 5,336,616.
©2002 Wright Medical Technology, Inc. All Rights Reserved.

SK 838-602 Rev. 02.03