

LINEAGE[®]

Acetabular Cup System

Polyethylene Articulation

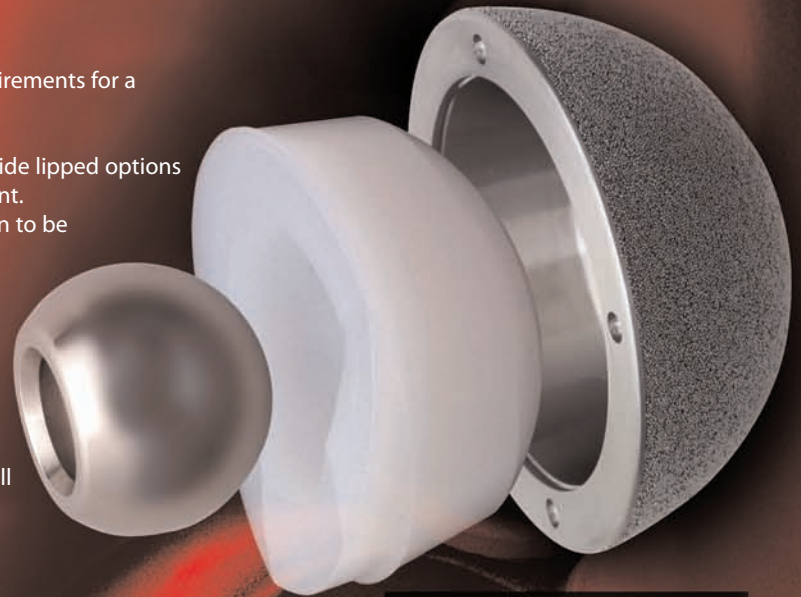


WRIGHT.


Joint stability and proper center of rotation are critical requirements for a successful total hip replacement.

The LINEAGE® Acetabular System with UHMWPE liners provide lipped options for increased femoral head coverage promoting a stable joint. Standard and lateralized options allow the center of rotation to be re-established, further aiding in optimum joint mechanics.

- Ethylene oxide sterilization minimizes oxidative degradation
- 28 and 32mm inside diameter options
- Standard and +4mm lateralized options
- 0° and 15° lip options allow 360° positioning of lip in shell
- Duramer® polyethylene with nondestructive sterilization minimizes oxidative degradation.
- Beaded porous surface provides biologic fixation.
- Solid and three-holed options for surgical flexibility.

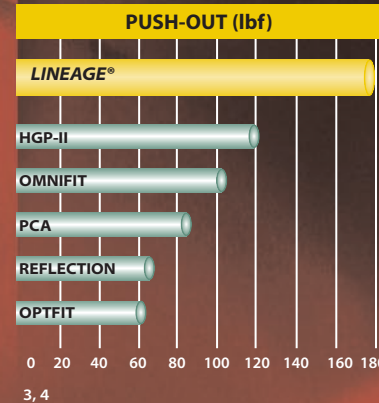
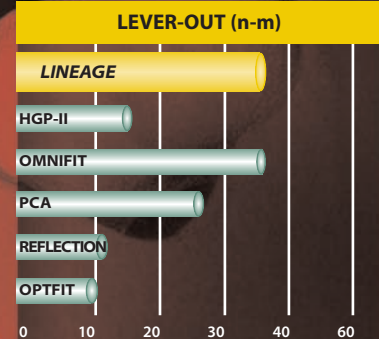
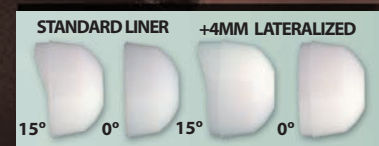


Apical hole allows visualizing full cup seating and accepts apical hole plug sealing bone implant interface.



Full congruency of the polyethylene/shell interface inhibits micromotion and resulting polyethylene debris.

A 14° gradient flange creates a 2mm press-fit at the rim of acetabulum for enhanced cup stability.^{1,2}



LINEAGE® Acetabular Poly Liners — 28mm ID		
3645-2801	15° x 28mm	Group 1
3645-2802	15° x 28mm	Group 2
3645-2803	15° x 28mm	Group 3
3645-2804	15° x 28mm	Group 4
3647-2801	15° x 28mm +4 Lat	Group 1
3647-2802	15° x 28mm +4 Lat	Group 2
3647-2803	15° x 28mm +4 Lat	Group 3
3647-2804	15° x 28mm +4 Lat	Group 4
3641-2801	0° x 28mm	Group 1
3641-2802	0° x 28mm	Group 2
3641-2803	0° x 28mm	Group 3
3641-2804	0° x 28mm	Group 4
3643-2801	0° x 28mm +4 Lat	Group 1
3643-2802	0° x 28mm +4 Lat	Group 2
3643-2803	0° x 28mm +4 Lat	Group 3
3643-2804	0° x 28mm +4 Lat	Group 4

LINEAGE® Acetabular Poly Liners — 32mm ID		
3645-3202	15° x 32mm	Group 2
3645-3203	15° x 32mm	Group 3
3645-3204	15° x 32mm	Group 4
3647-3202	15° x 32mm +4 Lat	Group 2
3647-3203	15° x 32mm +4 Lat	Group 3
3647-3204	15° x 32mm +4 Lat	Group 4
3641-3202	0° x 32mm	Group 2
3641-3203	0° x 32mm	Group 3
3641-3204	0° x 32mm	Group 4
3643-3202	0° x 32mm +4 Lat	Group 2
3643-3203	0° x 32mm +4 Lat	Group 3
3643-3204	0° x 32mm +4 Lat	Group 4

BIBLIOGRAPHY

- Adler E, Stuchin SA, Kummer FJ: Stability of press-fit acetabular cups. J Arthroplasty 7(3):295-301, September 1992.
- Harkness JW, Reis M, LaVelie D, Salchit A: Dimensional photoelastic analysis of acetabular stresses produced by press-fit cups. Smith & Nephew Orthopedics, February 1997.
- Tradonsky S, Postak PD, Froimson AI, Greenwald AS: A comparison of the disassociation strength of modular acetabular components. Clinical Orthopaedics 296:154-160, 1993.
- Data on file at Wright Medical Technology, Inc.



Wright Medical Technology, Inc.
 5677 Airline Road
 Arlington, TN 38002
 901.867.9971 phone
 800.238.7188 toll-free
 www.wmt.com

Wright Medical Europe SA
 Commerce Parc
 Gebouw B, 6th Floor Krijgsmann II
 1186 DM Amsterdam
 The Netherlands
 Tel +31(0) 205450100