

contains

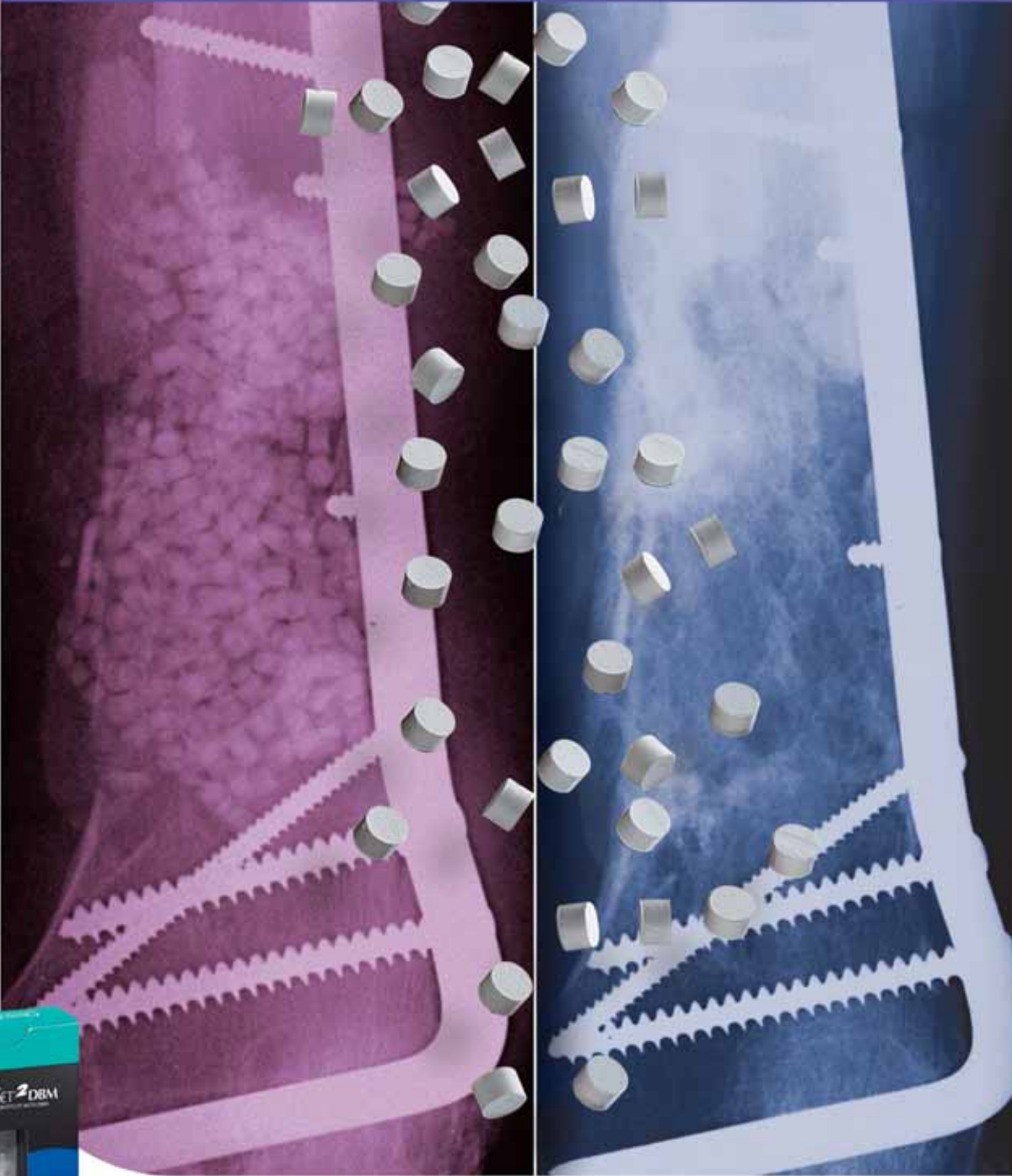
BMP-2 TGF- β 1
BMP-4
IGF-1



BIOLOGIC solutions

OSTEOSET[®] 2 DBM

BONE GRAFT SUBSTITUTE WITH BIOASSAYED DBM



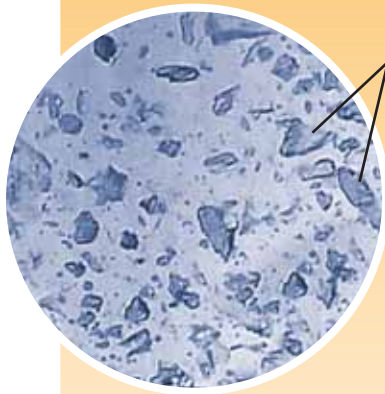
Sustained Release of BMPs.
Faster Remodeling.
Powerful Repair.

WRIGHT.
TM

OSTEOSET[®] 2 DBM

BONE GRAFT SUBSTITUTE WITH BIOASSAYED DBM

DBM encapsulated in the calcium sulfate is gradually released over the period of resorption, allowing a steady impact from the range of growth factors found in DBM, including BMP-2, BMP-4, and others.



DBM particles

Pellet

Cross-Section

OSTEOSET[®] 2 DBM pellet (Mag. 15.4x) demonstrating even distribution of DBM particles throughout the pellet.

THE POWER OF SUSTAINED BMP RELEASE.

OSTEOSET[®] 2 DBM graft is a unique bone graft substitute incorporating demineralized bone matrix (approximately 53% by volume) into OSTEASET[®] surgical-grade calcium sulfate pellets. These two bone graft materials, each with a long clinical history, provide an ideal combination of osteoinduction and osteoconduction for guided bone regeneration. Unlike many DBM-containing products, every lot of OSTEASET[®] 2 DBM graft is bioassayed to ensure its osteoinductive potential.



PRE-OPERATIVE

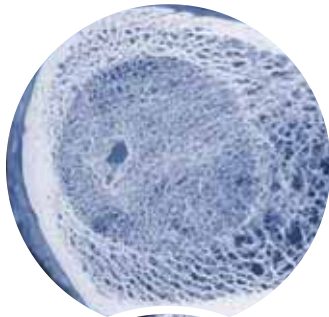


IMMEDIATE POST-OP

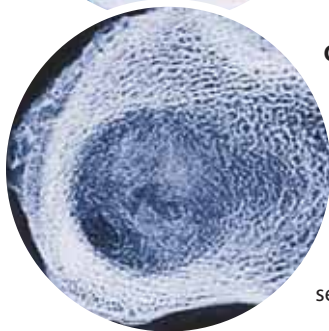


POST-OPERATIVE | 5 MONTHS

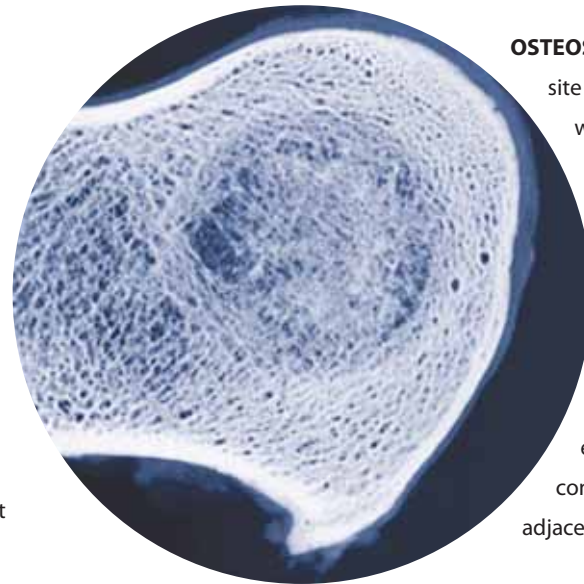
CANINE HUMERUS CONTACT RADIOGRAPHS



Autograft
at six weeks



OSTEASET® DBM graft site at six weeks demonstrating concentric lamellar bone formation and organized trabecular pattern throughout the defect, similar to what is seen in the autograft filled defect



OSTEASET® DBM graft site at twenty-six weeks reveals a well developed network of fine and coarse trabeculae with interconnecting struts fully occupying the entire defect and continuous with adjacent medullary bone



MECHANISM OF ACTION

DBM is encapsulated in the calcium sulfate pellet.

Calcium sulfate resorbs, providing an osteoconductive scaffold.

A sustained release of BMPs from the osteoinductive DBM.

Sustained release of BMP-2, BMP-4, TGF-β1, IGF-1



ORDERING information



8600-3005
OSTEOSET® 2 DBM
3.0 MM PELLETS 5cc

8600-3010
OSTEOSET® 2 DBM
3.0 MM PELLETS 10cc

8600-4810
OSTEOSET® 2 DBM
4.8 MM PELLETS 10cc

8600-4820
OSTEOSET® 2 DBM
4.8 MM PELLETS 20cc

WHEN INTRAOPERATIVE SUPPORT IS NEEDED, TRY



84XS-0405
MIIG® X3
INJECTABLE GRAFT 5cc

84XS-0415
MIIG® X3
INJECTABLE GRAFT 15cc



Wright Medical Technology, Inc.
5677 Airline Road
Arlington, TN 38002
901.867.9971 phone
800.238.7188 toll-free
www.wmt.com

Wright Cremascoli Ortho SA
Zone Industrielle la Farlecle
Rue Pasteur BP 222
83089 Toulon Cedex 09
France
011.33.49.408.7788 phone

™Trademarks and ®Registered marks of Wright Medical Technology, Inc.
Covered by one or more of the following US Patents 5,614,206; 5,807,567; 6,030,636. Patents pending.
© 2004 Wright Medical Technology, Inc. All Rights Reserved

SK 211-700
Rev. 04.04