



# ALLOMATRIX<sup>®</sup> CUSTOM

Versatile Bone Putty with  
Large Cancellous Chips

Optimizable for Spine and Trauma

Address Individual Patient Bone  
Grafting Needs In A Way No  
Pre-Mixed Putty Can.

**WRIGHT.**  




# ALLOMATRIX<sup>®</sup> CUSTOM

## Versatile Bone Putty with Large Cancellous Chips

### RAW FLEXIBILITY TO MEET PATIENT PATHOLOGY NEEDS

Surgeons desire the independence and flexibility to custom blend graft materials to control structural consistency. ALLOMATRIX<sup>®</sup> CUSTOM Bone Graft Putty delivers. With features that include an osteoinductive Demineralized Bone Material (DBM), a osteoconductive carrier medium, and the ability to reconstitute in the OR, ALLOMATRIX<sup>®</sup> CUSTOM Bone Graft Putty meets individual patient bone grafting needs in a way no pre-mixed putty can.

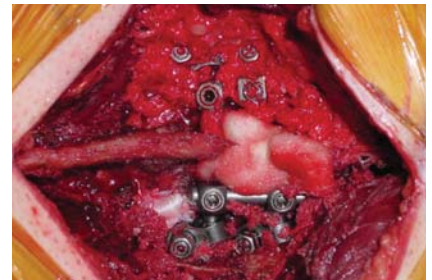
### MIXABILITY FOR MAXIMUM Flexibility



**Bone Marrow Aspirate.**  
Add Osteogenic Potential. (Optional)

### OPTIMUM CANCELLOUS CHIP CONTENT — YOUR CHOICE

ALLOMATRIX<sup>®</sup> CUSTOM Bone Graft Putty incorporates DBM and the highest cancellous chip content on the market – both recovered from the same donor, which is blended at the time of surgery. The result is a custom product that can range from minimum to maximum CBM content. ALLOMATRIX<sup>®</sup> CUSTOM Putty provides flexibility to augment the graft with optional bone marrow aspirate without compromising handling characteristics.

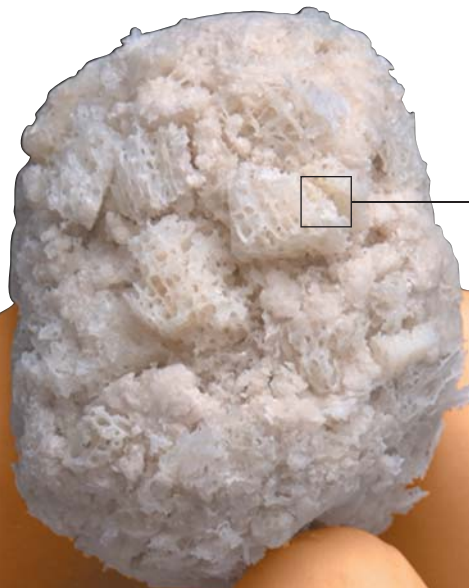


Actual ALLOMATRIX<sup>®</sup> CUSTOM product mixed by surgeon and placed in situ.



**Control Cancellous Content.**  
Dial-in Desired Structural Consistency.

### MINIMUM TO MAXIMUM Structural Consistency



**CASE STUDY - Challenging Trauma**

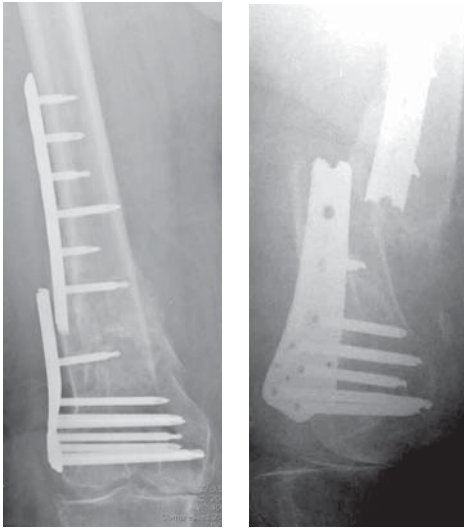


Figure 1 | A/P and lateral radiographs demonstrating broken plate and nonunion.

58 y/o female with morbid obesity (>400lbs). She previously sustained a comminuted distal supracondylar femur fracture and was treated with a percutaneous plating technique. At 9 months post fixation she sustained a fracture through the plate with obvious atrophic nonunion and was referred for further care.

Patient was taken to surgery for revision. At surgery a large anterior non-union defect was filled with 20cc's of ALLOMATRIX® CUSTOM Graft + 35 cc's of iliac and contralateral distal femoral condyle bone marrow aspirate. (Figure 2) The BMA was obtained in 3-4 cc separate aspirates.



Figure 2 |



Figure 3 | Immediate Post-op radiograph



Figure 4 | Radiographs at 5 months post surgery demonstrating excellent graft maturation and consolidation. Patient was ambulating pain free for the first time in 2 years.



**MARROW VOLUME | Recommendations**

ALLOMATRIX® CUSTOM Volume (dry powder)	Bone Marrow or Blood Volume
5 cc	3 cc
10 cc	6 cc

**NOTE |** These approximations were obtained using anticoagulated fluids. It is suggested that the user begin with the amounts in the table, and add additional fluids to achieve desired handling characteristics. Additional information is included with the labeling accompanying the product.

# ORDERING information

## OSTEOGENIC SOLUTIONS



### ALLOMATRIX® CUSTOM Versatile Bone Putty with Large Cancellous Chips

86XC-0500  
ALLOMATRIX® CUSTOM  
Bone Putty                    5 cc                    1 ea

86XC-1000  
ALLOMATRIX® CUSTOM  
Bone Putty                    10 cc                    1 ea

## SOFT-TISSUE REINFORCEMENT



### GRAFTJACKET® Regenerative Tissue Matrix

8600-4X07  
GRAFTJACKET® REGENERATIVE TISSUE MATRIX - MAXIMUM FORCE  
Dimensions                    4 x 7cm                    1ea.  
Average Thickness            1.5mm

86MX-5X05  
GRAFTJACKET® REGENERATIVE TISSUE MATRIX - MAXIMUM FORCE  
Dimensions                    5 x 5cm                    1ea.  
Average Thickness            1.5mm



86UM-4X07  
GRAFTJACKET® REGENERATIVE TISSUE MATRIX - MAXFORCE *EXTREME*  
Dimensions                    4 x 7cm                    1ea.  
Average Thickness            2.0mm



### Wright Medical Technology, Inc.

5677 Airline Road  
Arlington, TN 38002  
901.867.9971 phone  
800.238.7188 toll-free  
www.wmt.com

### Wright Medical Europe SA

Rue Pasteur BP 222  
83089 Toulon Cedex 9  
France  
011.33.49.408.7788 phone  
www.wmt-emea.com

\*Dry ingredients are pre-mixed. Putty appearance varies with mixing.  
™Trademarks and ®Registered marks of Wright Medical Technology, Inc.  
Covered by one or more of the following patents.  
US Patents 5,614,206; 5,807,567; 6,030,636. Patents pending.  
©2005 Wright Medical Technology, Inc. All Rights Reserved.