

ALLOMATRIX® DR

Semi-Structural Graft for Small Peri-Articular Fractures

A Firm Foundation: The Perfect Balance of Structure & Conformity.



WRIGHT.

ALLOMATRIX® DR

Semi-Structural Graft for Small Peri-Articular Fractures

OPTIMIZED GRAFT FOR SMALL PERI-ARTICULAR FRACTURES

ALLOMATRIX® DR Bone Graft Composite is designed to help maintain reduction of the articular fragment(s) prior to definitive hardware placement. In small peri-articular fractures, ALLOMATRIX® DR Graft provides maximized osteoconductivity, confirmed osteoinductivity of component DBM, and easy mixing.

A DIFFERENCE YOU'LL APPRECIATE

- No morbidity associated with autograft harvesting
- Optimized alternative for autograft
- Excellent option for surgery center grafting



ALLOMATRIX® DR Putty helping to maintain fracture reduction in a distal radius fracture prior to hardware placement.



DESIGN CRITERION 1
Increased Structural Stiffness

DESIGN CRITERION 2
Optimized Cancellous Particle Size

DESIGN CRITERION 3
Application-Specific Volume

*Design Rationale
Presented By
Barbara Blum, PhD*

DESIGN CRITERION 1

INCREASED STIFFNESS FOR STRUCTURAL CAPACITY

Maintain Fracture Fragment Reduction

ALLOMATRIX® DR Graft is specifically formulated for increased resistance to compressive deformity, and to help maintain fracture reduction in a distal radius fracture prior to hardware placement.

A FIRM FOUNDATION FOR FIXATION

A Perfect Balance of Structure & Conformity

DESIGN CRITERION 2

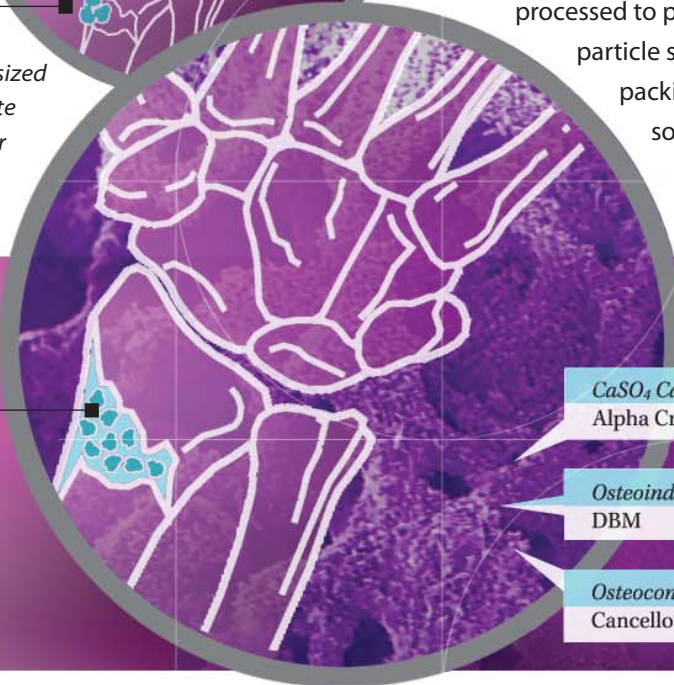
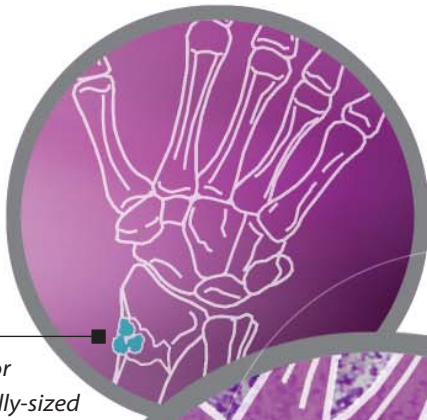
OPTIMIZED PACKING FOR SMALL DEFECTS

*More Complete Filling of Defect
Smaller Cancellous Particle Size Specific for Small
Peri-articular Fractures*

The cancellous bone material in ALLOMATRIX® DR Graft is carefully processed to produce a small particle size. This reduced particle size has been selected to ensure maximum packing in small defects, avoiding the difficulty sometimes experienced with widely variable, or oversized, autogenous & allogenic bone chips.

Large, irregular chips from autograft or suboptimally-sized autograft. Note the void left for possible tissue invagination.

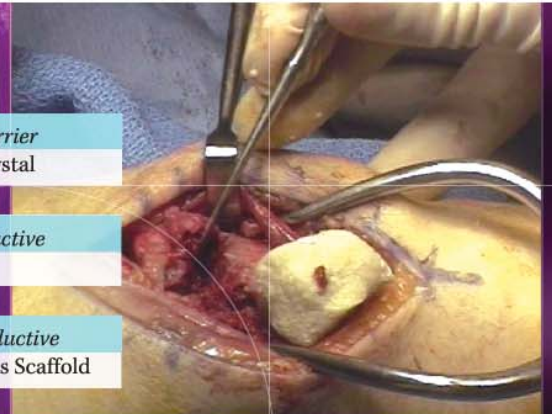
The smaller size of ALLOMATRIX® DR Graft maximizes packing host bone contact.



CaSO₄ Carrier
Alpha Crystal

Osteoinductive
DBM

Osteoconductive
Cancellous Scaffold



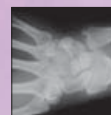
A POWERFUL GRAFT BIOCOMPOSITE FOR SMALLER FRACTURES

DESIGN CRITERION 3

APPLICATION-SPECIFIC VOLUME

*Cost Containment
Minimal Waste of DBM or Cancellous Tissue*

ALLOMATRIX® DR Graft is provided in an indication-friendly volume (3cc) to eliminate or reduce material waste with small peri-articular fractures. The 3cc volume of ALLOMATRIX® DR Graft was selected based on clinical test site usage for distal radius, foot and ankle applications.



APPLICATIONS

Distal Radius Fractures



Pilon Fractures



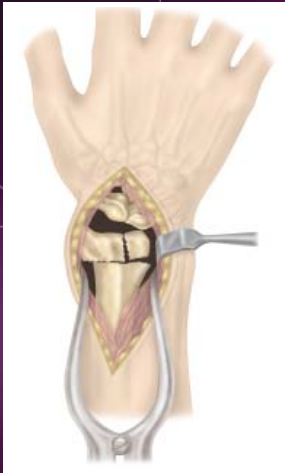
Calcaneus Fractures

SURGICAL TECHNIQUE

ALLOMATRIX® DR PUTTY USED DURING ORIF, DISTAL RADIUS PROCEDURE

Presented by: Mark Jobe, MD – Campbell Clinic, Memphis, TN & Steven Stuchin, MD – Hospital for Joint Diseases, NYU, NY

- 1** Traction-assistance may be used to aid in fracture reduction. Exposure is obtained using standard technique.
- 2** Fracture reduction is accomplished using standard technique.
- 3** ALLOMATRIX® DR Bone Graft Composite is packed into the defect.
- 4** Definitive hardware fixation is accomplished using standard technique.



ORDERING INFORMATION

86DR-0300 ALLOMATRIX® DR GRAFT 3CC

When internal fixation is called for, use ...

4900-1000 LOCON-T® DISTAL RADIUS PLATING SYSTEM
For implant ordering information, please call.



Wright Medical Technology, Inc.
5677 Airline Road
Arlington, TN 38002
901.867.9971 phone
800.238.7188 toll-free
www.wmt.com

Wright Medical Europe, SA
Rue Pasteur BP 222
83089 Toulon Cedex 9
France
011.33.49.408.7788
www.wmt-emea.com

*Dry ingredients are pre-mixed. Putty appearance varies with mixing.

™Trademarks and ®Registered marks of Wright Medical Technology, Inc.

Covered by one or more of the following patents. US Patents 5,614,206; 5,807,567; 6,030,636. Patents pending.

©2007 Wright Medical Technology, Inc. All Rights Reserved.

SK 490-801 Rev. 3.07

