

CONSERVE[®] Total

6MM SHELL with BFH™ TECHNOLOGY

SURGICAL TECHNIQUE



WRIGHT.

CONSERVE[®]

6MM SHELL
with BFH™ TECHNOLOGY

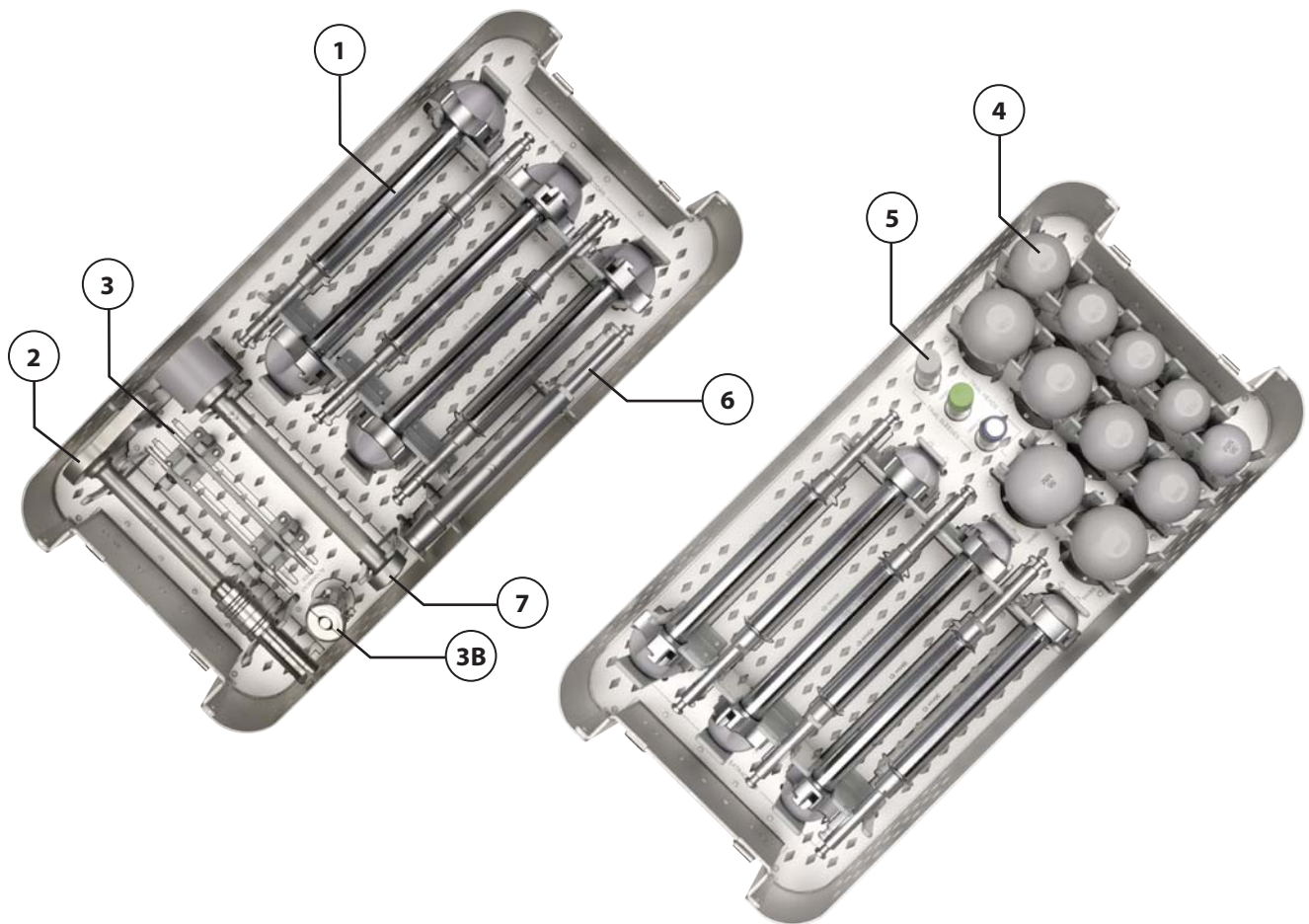
as described by
HARLAN AMSTUTZ, MD

CONSERVE[®]

6MM SHELL
with BFH[™] TECHNOLOGY **as described by Harlan Amstutz, MD**

general PRECAUTIONS

Proper surgical procedures and techniques are the responsibility of the medical professional. Each surgeon must evaluate the appropriateness of the procedure used based on personal medical training and experience. Wright cannot recommend a particular surgical technique suitable for all patients.



- | | | | |
|-----------|--|----------|---|
| 1 | SHELL IMPACTOR / EXTRACTOR | 4 | FEMORAL HEAD TRIALS |
| 2 | SHELL IMPACTOR HANDLE (PROFEMUR [®]) | 5 | FEMORAL HEAD TRIAL SLEEVES |
| 3 | SHELL ALIGNMENT PINS | 6 | SHELL IMPACTOR ADAPTOR |
| 3B | SHELL ALIGNMENT GUIDE | 7 | FEMORAL HEAD IMPACTOR (BFH [™] Impactor) |

surgical PREPARATION



FIGURE 1 |



FIGURE 2A |

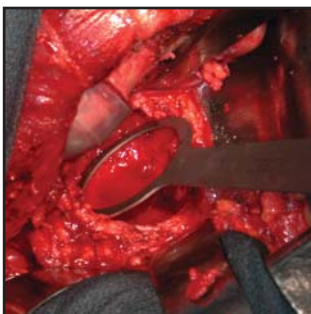


FIGURE 2B |



FIGURE 3 |

STEP 1

Ream the acetabulum to proper size and depth. | **FIGURE 1** Reaming size to size will allow for 1mm of diametrical press-fit at the rim of the cup. However, if a more secure fit is desired then under-reaming by 1mm is recommended. As an example a 56mm cup can be reamed to 56mm in diameter for 1mm of press-fit or 55mm for 2mm of press-fit.

NOTE | For cancellous acetabular bone quality, it is recommended to under ream the acetabulum by 1mm. For cortical acetabular bone quality it is recommended to ream size to size

STEP 2

After reaming the acetabulum check for proper roundness and size in three planes with the ring gauges. | **FIGURE 2A** and | **FIGURE 2B**

The gauge that is 1mm under the component OD (outer diameter) should just bottom out with pressure.

STEP 3

As a secondary manner of checking for roundness and sphericity utilize the translucent acetabular sizers. | **FIGURE 3**

In addition to checking for appropriate sizing anterior osteophytes can be osteotomized prior to component insertion. | **FIGURE 4** This is important because the CONSERVE® Plus cups are not a full 180°, therefore the components will sit lower in the acetabulum.

STEP 4

After determining the appropriate cup size attach the appropriate sized impactor/extractor to the matching shell. | **FIGURE 5** Shells range in size from 42-64mm in diameter. There are eleven different impactor/extractors in the instrument tray. The impactor/extractor is attached to the shell by pulling

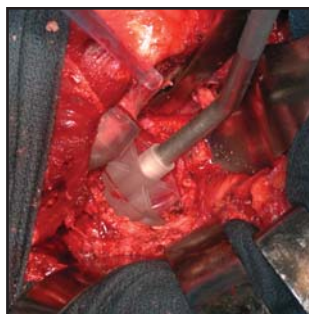


FIGURE 4 |



FIGURE 5 |



FIGURE 6 |



FIGURE 7 |



FIGURE 8 |



FIGURE 9 |

up on the sleeve that covers the impactor/extractor and sliding the three legs of the device into the shell's three locking locations. | **FIGURE 6** Twist the shell clockwise to ensure the legs are locked into the shell and release the sleeve. | **FIGURE 7**

NOTE | The plastic tip on the end of each impactor/extractor is designed to center each impactor/extractor into the shell in case you need to re-attach the shell to the impactor/extractor after insertion. It is removable.

STEP 5

Before connecting the impactor handle to the impactor/extractor, secure the alignment guide pins to the impactor handle. | **FIGURE 8** These guide pins are meant to guide placement of the acetabular shell. The alignment pins should be facing both parallel and perpendicular to the patient to ensure a 45° position with 15° of anteversion. The alignment guide sleeve has both left and right markings.

STEP 6

Once the impactor/extractor, shell and alignment pins are securely attached proceed with attaching the impactor handle to the impactor/extractor. | **FIGURE 9** This is accomplished by pulling up on the impactor handle mid-section and sliding the female portion of the impactor over the male portion of the impactor/extractor. Once this is done simply release the mid section and the impactor/extractor will lock the impactor into place.

STEP 7

Impact the shell into the acetabulum. | **FIGURE 10** If a secondary impaction is desired the impactor adaptor can be utilized with the trial head that corresponds to the inner diameter of the shell. This combination of impactor adaptor and trial head forms a "ball-on-a-stick" type impactor device that will impact the dome of the shell.



FIGURE 10 |



FIGURE 11 |



FIGURE 12 |



FIGURE 13 |



FIGURE 14 |

NOTE | For first time users it is recommended to take an intra-operative X-ray to ensure proper seating of the shell. | **FIGURE 11**

STEP 8

Once the shell is securely fit into the acetabulum and the femoral stem is implanted proceed to head trialing. | **FIGURE 12** The head trials range in size from 36-56mm in diameter. The set contains head trial sleeves for -3.5mm, +0mm and +3.5mm necks increments. Once the sleeve is placed inside the trial head a trial reduction may be performed. | **FIGURE 13**

NOTE | In the CONSERVE® Plus 6mm shell system eleven of the twelve shell sizes use a head 6mm smaller than the thin shell. The only exception is the 64mm cup which has a 56 mm head for an 8mm difference. (See reaming chart)

STEP 9

Once the appropriate head is chosen impact the BFH™ head onto the stem using the BFH™ femoral head impactor. | **FIGURE 14**

STEP 10

Reduce the hip and check for final motion and stability prior to closure. | **FIGURE 15**



FIGURE 15 |

CONSERVE® PLUS CUP REAMING GUIDE

ITEM NUMBER	6MM CUP ITEM DESCRIPTION	ACTUAL		1MM PRESS-FIT	2MM PRESS-FIT
		I.D.	O.D.	REAM TO	REAM TO
3802-3642	Acetabular Cup, 36mm ID,42mm OD	36mm	43mm	42mm	41mm
3802-3844	Acetabular Cup, 38mm ID, 44mm OD	38mm	45mm	44mm	43mm
3802-4046	Acetabular Cup, 40mm ID, 46mm OD	40mm	47mm	46mm	45mm
3802-4248	Acetabular Cup, 42mm ID, 48mm OD	42mm	49mm	48mm	47mm
3802-4450	Acetabular Cup, 44mm ID, 50mm OD	44mm	51mm	50mm	49mm
3802-4652	Acetabular Cup, 46mm ID, 52mm OD	46mm	53mm	52mm	51mm
3802-4854	Acetabular Cup, 48mm ID, 54mm OD	48mm	55mm	54mm	53mm
3802-5056	Acetabular Cup, 50mm ID, 56mm OD	50mm	57mm	56mm	55mm
3802-5258	Acetabular Cup, 52mm ID, 58mm OD	52mm	59mm	58mm	57mm
3802-5460	Acetabular Cup, 54mm ID, 60mm OD	54mm	61mm	60mm	59mm
3802-5662	Acetabular Cup, 56mm ID, 62mm OD	56mm	63mm	62mm	61mm
3802-5664	Acetabular Cup, 56mm ID, 64mm OD	56mm	65mm	64mm	63mm

CONSERVE® TOTAL HEADS		CONSERVE® PLUS 6MM CUPS		CONSERVE® PLUS 6MM HA CUPS		CONSERVE® PLUS 6MM SPIKED CUPS		CONSERVE® PLUS FEMORALS	
SKU	SIZE	SKU	SIZE	SKU	SIZE	SKU	SIZE	SKU	SIZE
2600-0025	36 -3.5	3802-3642	36X42	38HA-3642	36X42	38SP-3642	36X42	3802-1036	36
2600-0026	36 +0								
2600-0027	36 +3.5								
3801-3804	38 -3.5	3802-3844	38X44	38HA-3844	38X44	38SP-3842	38X44	3802-1038	38
3801-3800	38 +0								
3801-3835	38 +3.5								
3801-4004	40 -3.5	3802-4046	40X46	38HA-4046	40X46	38SP-4046	40X46	3802-1040	40
3801-4000	40 +0								
3801-4035	40 +3.5								
3801-4204	42 -3.5	3802-4248	42X48	38HA-4248	42X48	38SP-4248	42X48	3802-1042	42
3801-4000	42 +0								
3801-4235	42 +3.5								
3801-4404	44 -3.5	3802-4450	44X50	38HA-4450	44X50	38SP-4450	44X50	3802-1044	44
3801-4400	44 +0								
3801-4435	44 +3.5								
3801-4604	46 -3.5	3802-4652	46X52	38HA-4652	46X52	38SP-4652	46X52	3802-1046	46
3801-4600	46 +0								
3801-4635	46 +3.5								
3801-4804	48 -3.5	3802-4854	48X54	38HA-4854	48X54	38SP-4854	48X54	3802-1048	48
3801-4800	48 +0								
3801-4835	48 +3.5								
3801-5004	50 -3.5	3802-5056	50X56	38HA-5056	50X56	38SP-5056	50X56	3802-1050	50
3801-5000	50 +0								
3801-5035	50 +3.5								
3801-5204	52 -3.5	3802-5258	52X58	38HA-5258	52X58	38SP-5258	52X58	3802-1052	52
3801-5200	52 +0								
3801-5235	52 +3.5								
3801-5404	54 -3.5	3802-5460	54X60	38HA-5460	54X60	38SP-5460	54X60	3802-1054	54
3801-5400	54 +0								
3801-5435	54 +3.5								
3801-5604	56 -3.5	3802-5662	56X62	38HA-5662	56X62	38SP-5662	56X62	3802-1056	56
3801-5600	56 +0	3802-5664	56X64	38HA-5664	56X64	38SP-5664	56X64		
3801-5635	56 +3.5								



Wright Medical Technology, Inc.

5677 Airline Road
Arlington, TN 38002
901.867.9971 phone
800.238.7188 toll-free
www.wmt.com

Wright Cremascoli Ortho SA

Zone Industrielle la Farlecle
Rue Pasteur BP 222
83089 Toulon Cedex 09
France
011.33.49.408.7788 phone