

BIOLOGIC solutions

Graft Jacket[®]

REGENERATIVE TISSUE MATRIX

Hand Surgery

SURGICAL TECHNIQUE



PRIMARY
SURGEON ADVISOR

Cynthia Harding, MD

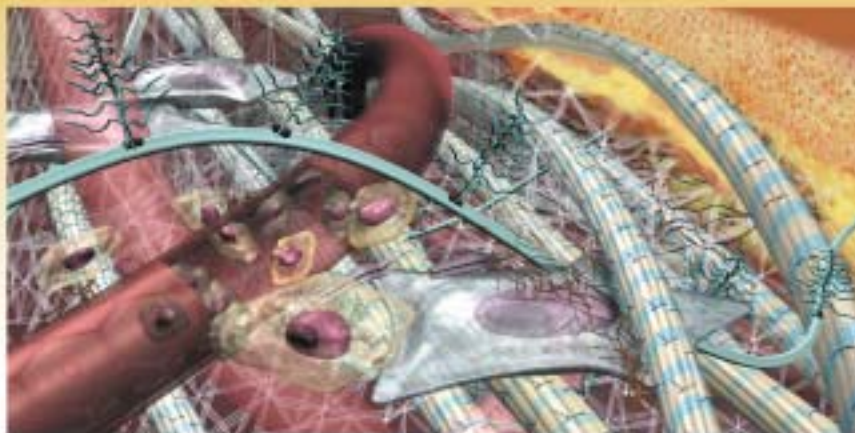
Off-the-shelf availability
Eliminate autograft harvest
Rehab without donor site concerns

WRIGHT.

the process of tissue regeneration with GRAFTJACKET® Regenerative Matrix

The vascular architecture is endothelialized, and host stem cells migrate and bind specifically to protein components of the matrix. Host cells respond to the three-dimensional architecture and adapt to the local environment.

**rapid
revascularization
and repopulation**



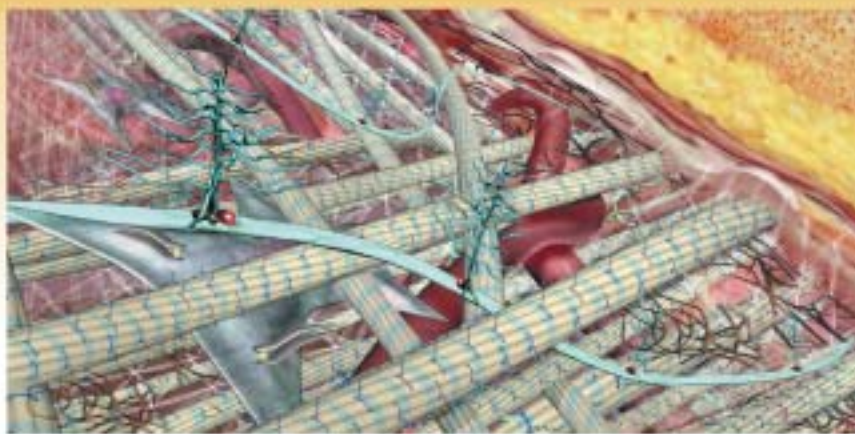
The matrix is now fully vascularized, repopulated, and integrated into the host tissue. Proteins undergo normal breakdown and regeneration.

**remodeling
to the patient's
own tissue**



Host cells continue to respond to the local environment, and the matrix transitions into the tissue it is replacing at the site of the transplant.

**architectural
transition to
specific host tissue**



works like an autograft

Provides a bioactive matrix of collagens, elastin, blood vessel channels, and bioactive proteins that support natural revascularization, cell repopulation, and tissue remodeling.

GRAFTJACKET® thin Regenerative Tissue for hand surgery

demonstrated safety

Extensive donor screening and testing according to AATB and FDA guidelines for the absence of pathogens; no reported cases of disease transmission in 9 years of use and more than 450,000 grafts.

is more convenient than autograft (e.g. Extensor Retinaculum)

No donor site means faster procedures for you and decreased morbidity for patients; ideal for compromised patients. Off-the-shelf with 2-year shelf life.

rehab without donor site concerns

By eliminating donor site issues, recovery and rehabilitation can progress without concern of donor site complications.



Just as the body's own extracellular matrix interacts, binds, and connects with all tissues of the body, the GRAFTJACKET® Matrix provides a complex, three-dimensional array of proteins that interact with each other and with host cells. These proteins include networks of collagen, elastin, hyaluronan, and proteoglycans. In addition, the structural components of the vascular channels are retained, allowing rapid revascularization and cell repopulation.



Fibrillar collagen and Collagen VI



Elastin



Hyaluronan



Large and Small Proteoglycans



Fibronectin



Vascular Channels

application example:

provision of a gliding surface for adherent extensor tendon

surgical technique described by Cynthia Harding, MD

Proper surgical techniques are necessarily the responsibility of the medical professional. The following guidelines are furnished only as recommended techniques. Each surgeon must evaluate the appropriateness of the techniques based on his or her own medical training and expertise.



step 1

Dissect soft tissue to expose adherent extensor tendon. Carefully dissect fibrous adhesions to free extensor tendons from underlying metacarpal or phalanx.

step 2

Rehydrate the thin GRAFTJACKET® membrane in warm saline solution per package insert for 10 minutes prior to use.

Position the GRAFTJACKET® membrane over the surgical site to determine the appropriate size. Trim the membrane to the desired dimensions. Elevate the tendon and slide the GRAFTJACKET® membrane under the extensor tendon.

step 3

Take care to position the membrane such that the shiny (or reticular) side of the membrane faces the bone, and the dull (or basement) side of the membrane is in contact with the tendon.

The GRAFTJACKET® membrane can be wrapped around the bone or cut to cover extensor surface only. Secure graft by suture or local muscle fascia.

step 4

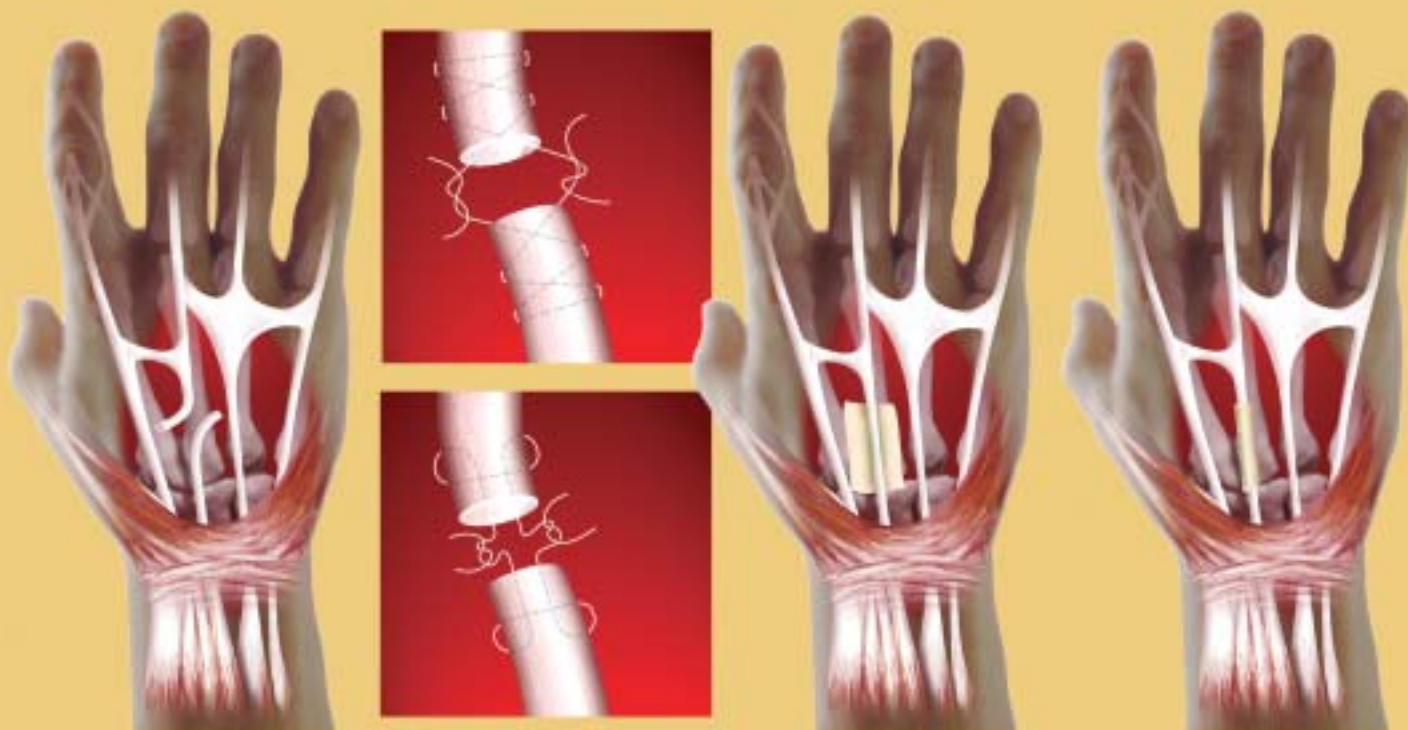
Thoroughly irrigate the wound with desired solution and close the wound in standard fashion.

application example:

augment suture repair of extensor tendon

surgical technique described by Cynthia Harding, MD

Proper surgical techniques are necessarily the responsibility of the medical professional. The following guidelines are furnished only as recommended techniques. Each surgeon must evaluate the appropriateness of the techniques based on his or her own medical training and expertise.



step 1

Dissect soft tissue to expose ruptured tendon. Visualize both ends of the rupture and position them for repair.

step 2

Repair the tendon with your choice of tendon suture technique.

step 3

Rehydrate the GRAFTJACKET® membrane in warm saline according to the package insert for 10 minutes.

Place the GRAFTJACKET® membrane over the surgical site to determine the appropriate size. Trim the membrane to the desired dimensions.

step 4

Wrap the GRAFTJACKET® membrane around the repaired tendon with the shiny (reticular) side towards the tendon and the dull (base-ment) side facing the bone and soft tissue.

Anchor the graft with suture at the corners.



ORDERING information

8600-2X04

GRAFTJACKET® Regenerative Tissue Matrix – HAND SURGERY

2x4cm Non-meshed, Thin 1EA.
(0.013 - 0.024")

INDICATIONS |

Tendon and tendon sheath repair of the hand

*This matrix is intended for replacement or repair of damaged or inadequate tissue and does not contain wound healing agents.

ADDITIONAL products



86TM-4X04

GRAFTJACKET® Regenerative Tissue Matrix – ULCER REPAIR

4x4cm Meshed, Thin 1EA.
(0.4mm - 0.8mm)

INDICATIONS |

Deep and superficial diabetic foot ulcers



8600-5X05

GRAFTJACKET® Regenerative Tissue Matrix

5x5cm Non-meshed, Standard Thickness 1EA.
(0.025 - 0.055")

INDICATIONS |

General tendon repair, Rotator Cuff Repair, Periosteum replacement



8600-5X10

GRAFTJACKET® Regenerative Tissue Matrix

5x10cm Non-meshed, Standard Thickness 1EA.
(0.025 - 0.055")

INDICATIONS |

General tendon repair, Rotator Cuff Repair, Periosteum replacement



Wright Medical Technology, Inc.

5677 Airline Road
Arlington, TN 38002
901.867.9971 phone
800.238.7188 toll-free
www.wmt.com

Wright Cremascoli Ortho SA

Zone Industrielle la Farlede
Rue Pasteur BP 222
83089 Toulon Cedex 09
France
011.33.49.408.7788 phone

*Registered marks of Wright Medical Technology, Inc.
Product processed by LifeCell Corporation for Wright Medical Technology, Inc.
Covered by one or more of the following US Patents 4,865,871; 5,024,830; 5,336,616.
©2003 Wright Medical Technology, Inc. All Rights Reserved.

SK 168-703