

biologic solutions

High
Suture Retention
Strength

•
Allows
Revascularization
and Incorporation

•
Support for
Remodeling to
Host Tissue

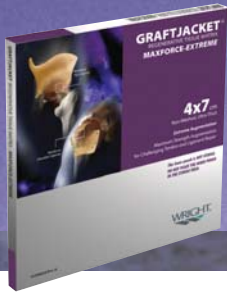
WRIGHT.


GRAFTJACKET[®]

Regenerative Tissue Matrix

MaxForce *Extreme*

Strength to augment challenging tendon and ligament repairs



GRAFTJACKET®

Regenerative Tissue Matrix

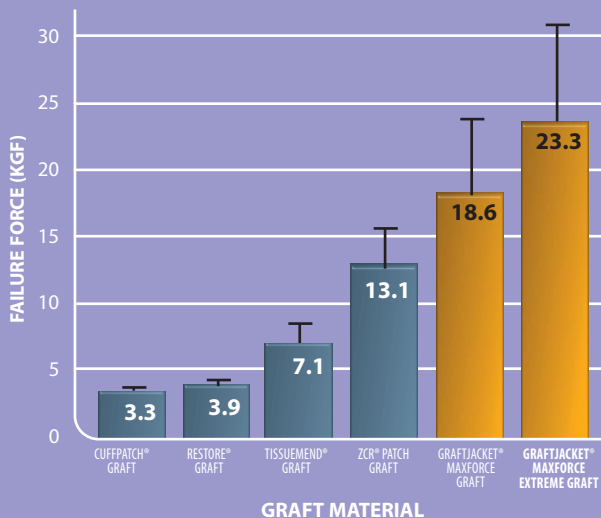
MaxForce Extreme

Strength to Augment Challenging Tendon and Ligament Repairs

SUTURE RETENTION strength

Failure Force Scoring of Commercially Available Reinforcement Graft Materials*

Single Horizontal Mattress Suture Configuration | #2 FIBERWIRE® Suture



F. Alan Barber, MD

Review of Anchors, Sutures and Graft Substitutes for the Rotator Cuff Presented at the Arthroscopic Association Meeting of North America Meeting, May 12-14, 2005, Vancouver, British Columbia

AUGMENT challenging repairs

Augmenting the Posterior Capsule for Increased Stability Following Total Hip Arthroplasty

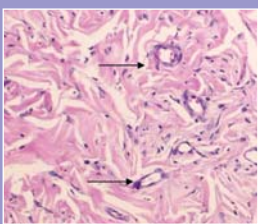
Presented by Mike Neel, MD

Dislocation is a leading cause of failure in total hip arthroplasties with rates as high as 2.6% for primary and 7.4% in revisions.^{1,2} The GRAFTJACKET® Matrix-MaxForce Extreme offers surgeons an alternative to prophylactically augment the posterior hip capsule in both primary and revision THA.



1. Expose posterior capsule in standard fashion.
2. Carry out primary or revision total hip arthroplasty.
3. Upon closure, reinforce the remaining capsule by attaching the GRAFTJACKET® Matrix-MaxForce Extreme to the greater trochanter and the rim of the acetabulum with drill holes or suture anchors.
4. Close using standard technique.

CELLULAR repopulation



Fibroblast infiltration and revascularization (arrows) at 21 days in athymic nude rat intramuscular model. H&E 25x

1. Li, E. et al. The natural history of posteriorly dislocated total hip replacement. *The Journal of Arthroplasty*. Vol. 14 No. 8: 964-968, 1999.
2. Alberton, G. et al. Dislocation after revision total hip arthroplasty. *JBJS* Vol. 84-A No. 10: 1788-1791, 2002.

ORDERING information



GRAFTJACKET®
Regenerative Tissue Matrix
MaxForce Extreme
86UM-4X07

4x7cm
Non-Meshed, UltraThick
(2.0mm Avg. Thickness)

INDICATIONS | Maximum Strength Augmentation for Challenging Tendon and Ligament Repair

Before use, physicians should review all risk information, which can be found in the "Directions for Use" attached to the packaging of each GRAFTJACKET® Graft.



Wright Medical Technology, Inc.
5677 Airline Road
Arlington, TN 38002
901.867.9971 phone
800.238.7188 toll-free
www.wmt.com

Wright Cremascoli Ortho SA
Zone Industrielle la Farlecle
Rue Pasteur BP 222
83089 Toulon Cedex 09
France
011.33.49.408.7788 phone

ZCR PATCH is a trademark of Zimmer.
CUFFPATCH® is a registered mark of Arthrotek.
RESTORE® is a registered mark of DePuy Orthopaedics.
TISSUEMEND® is a registered mark of Stryker Orthopaedics.
FIBERWIRE® is a registered mark of Arthrex.

*Registered marks of Wright Medical Technology, Inc.
Product processed by LifeCell Corporation for Wright Medical Technology, Inc.
Covered by one or more of the following US Patents 4,865,871; 5,024,830; 5,336,616; 6,652,887
© 2005 Wright Medical Technology, Inc. All Rights Reserved.

SK 093-305